

OLYMPUS®

Olympus is about life. About photographic innovations that capture precious moments of life. About advanced medical technology that saves lives. About information- and industry-related products that make possible a better living. About adding to the richness and quality of life for everyone. Olympus. Quality products with a **FOCUS ON LIFE**

MICROSCOPE DIGITAL CAMERA

DP12

3.34 MILLION PIXEL RESOLUTION

The new compact solution for professional digital imaging in microscopy



Compact, easy-to-use design and excellent

High-resolution 3.34 million pixel imaging

- The DP12 is equipped with a 1/1.8 inch interlaced scan CCD with 3.34M pixel resolution which ensures highly precise digital images. Even very fine structures of the specimen are clearly imaged.

The maximum image resolution is 2048 x 1536 pixels.

- SmartMedia cards used with DPOF-compliant P-200/P-330/P-400 printers will easily produce superb printed images whose quality rivals that of film photography.

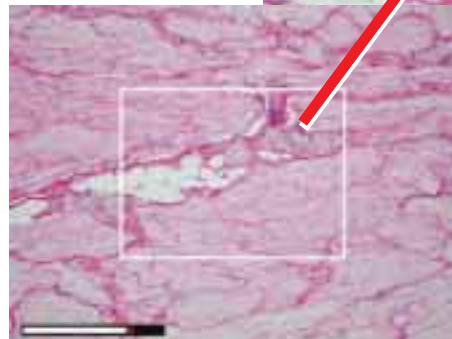
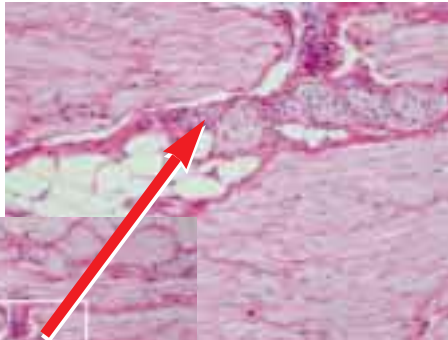


Easy Focusing

- 3.5" LCD monitor provides real-time display of large, easy-to-see images for faster, more accurate focusing and framing.

- With the focusing indicator and a 2 x electronic zoom function, pin-sharp focusing is easy even at low magnifications.

- The LCD monitor's tilting function allows image observation at the ideal angle.



2x zoom

Focus indicator



All controls near the operators' hand

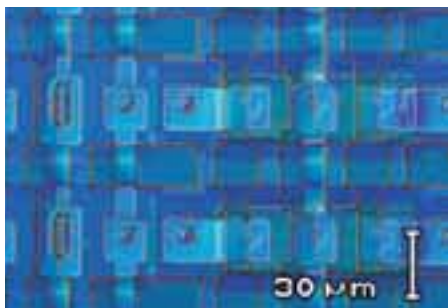
Compact control unit



(W) 131mm

Direct scale bar imprint

- A calibrated scale bar can be superimposed on the image in either a horizontal or vertical orientation. The scale bar can be saved and printed with the image.



Scale

Multi-functional, compact control unit

- Compact and robust stand alone camera for use with or without a PC.
- The camera head is equipped with a universal C-mount thread allowing attachment to almost any microscope.
- The 200,000 pixel 3.5" LCD monitor is integrated in the control pad forming a compact unit which uses desk space more effectively.
- The tiltable LCD monitor also functions as a protective lid for the control unit.
- The camera is operated entirely from the control unit. Users do not need to touch the camera head or the microscope for exposure.

image clarity.

◀ Actual Size



Software for image download and camera control

- The control unit is equipped with a high-speed USB interface. By using the optional software DP12-BSW images can easily be downloaded directly from the camera control unit to the PC. Additional application software for PC control of the camera is optional and varies by region.
- The SmartMedia card is removable, allowing images to be easily transferred to any PC using optional USB, FlashPath or PCMCIA SmartMedia reader.

Large 3.5" LCD monitor

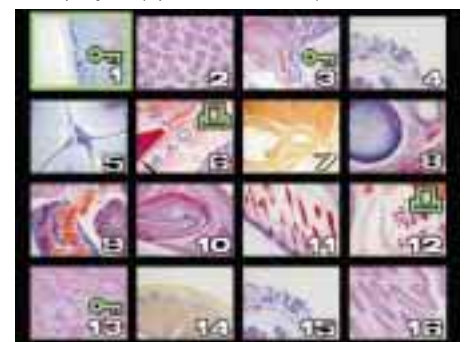
Maximum 128MB storage via SmartMedia

Easy adjustment for optimum image quality

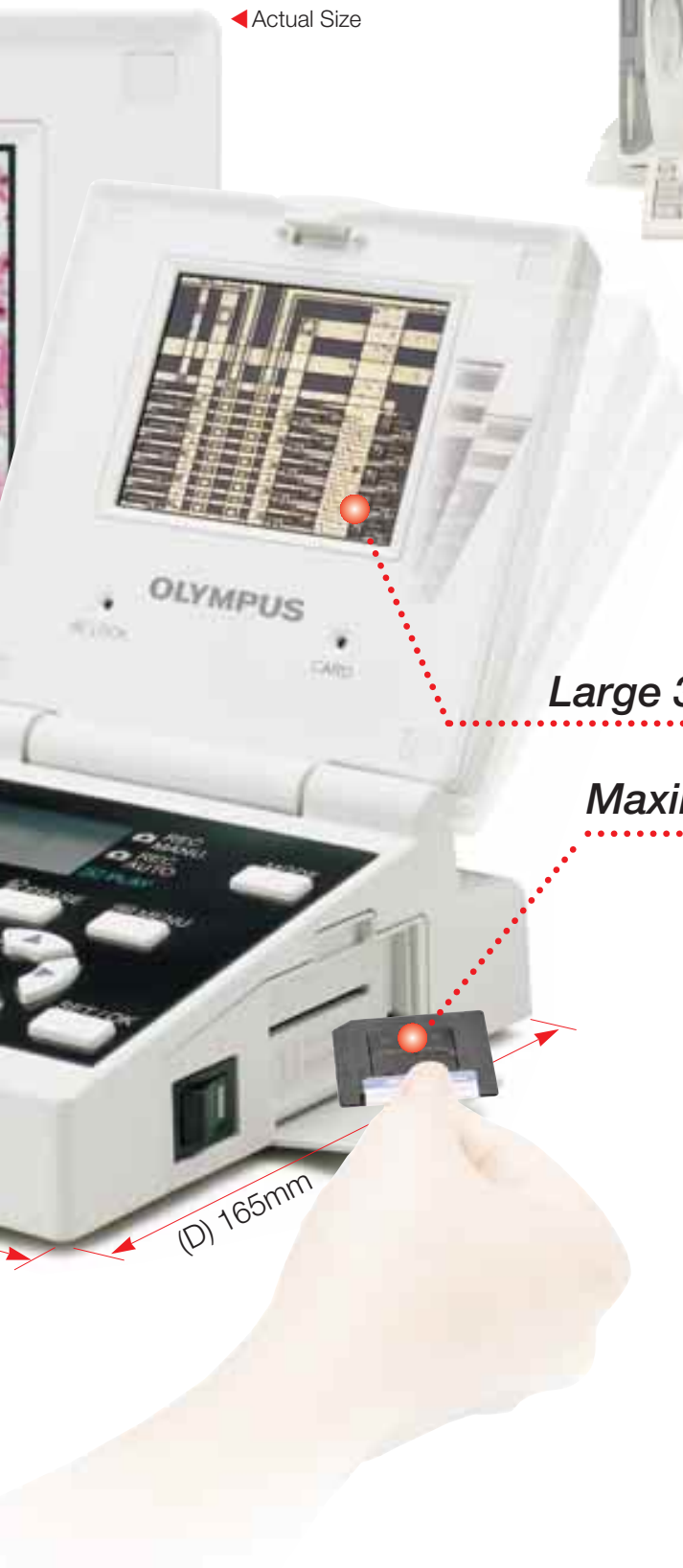
- Three different white balance modes are available for optimal color representation: One touch, automatic and manual.
- Exposure metering is selectable between 1% spot and 30% average metering.
- Users can choose automatic or manual exposure modes.

Large LCD monitor for on-screen image selection

- Date, time, shutter speed and file name are displayed and stored together with the microscope image.
- Acquired images can be displayed (up to 16 at once) on the screen.
- Images can be protected on the SmartMedia card or assigned for subsequent printing.
- Image data is retained on the SmartMedia card when the power is turned off.



16-frame display



Other features

DP-TRAD

The tripod mount for macro photography is optionally available. (the use on a tripod requires a macro lens which is not included)

Video signal output*

The control unit includes a video-output port for NTSC or PAL signals, allowing image display on an external video monitor.

* Please consult your nearest Olympus dealer for appropriate external video monitors.

DP12 basic unit



Control unit



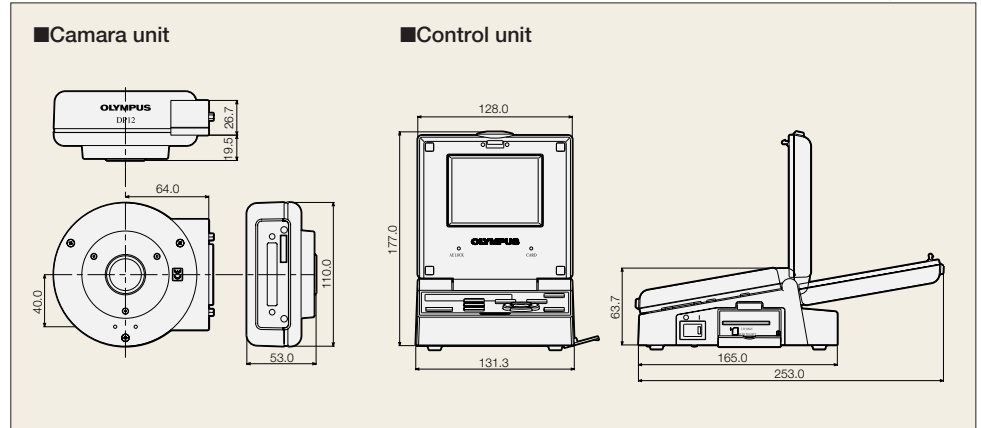
- 1 Display 2 Camera mode
- 3 Measuring area set-up/print instruction
- 4 Image erase 5 Menu display 6 AE lock/protect
- 7 Display image menu selection 8 EXPOSE
- 9 OTWB/INFO 10 SET/OK

DP12 specifications

Image sensor	1 / 1.8 inch interlace scan CCD with 3.34 Mpixel (effective 3.24 Mpixel)
Image recording	Metering system: 1% spot, 30% average Exposure control: Automatic, manual, AE lock Exposure time: Automatic 1/4,000 sec - 1/2 sec, Manual 1/4,000 sec - 8 sec White balance (3 modes): Full auto, one touch, manual Recording media: 3.3V SmartMedia (SSFDC) *The SmartMedia card is not included Resolution: SHQ (TIFF) 2048x1536 (Approx. 9.4MB) SHQ (JPEG) 2048x1536 (Approx. 2.3MB) HQ (JPEG) 1600x1200 (Approx. 790KB) SQ1 (JPEG) 1024x668 (Approx. 580KB) SQ2 (JPEG) 640x480 (Approx. 230KB)
Image display	3.5 inch 200,000 pixel TFT colour LCD Live image display: max. 30 frames/sec image magnifications 1x, 2x (Electronic zoom) Reproductive image display: 30 frames/sec Image magnifications 1/16x, 1/9x, 1/4x, 1x, 2x, 4x
I/O	DC input Data Output: USB Video output: Composite (NTSC/PAL) SSFDC slot Exposure adjustment: ±2EV (1/3 increments)

DP12 dimensions

(unit: mm)



*Monitor images are simulated.

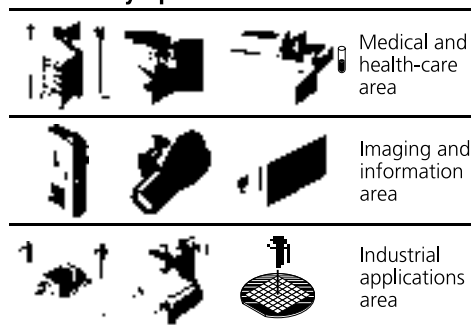
*All brands are trademarks or registered trademarks of their respective owners.

Web site address: <http://www.olympus.com>



Specifications are subject to change without any obligation on the part of the manufacturer.

Olympus business areas



OLYMPUS

FOCUS ON LIFE

OLYMPUS OPTICAL CO., LTD.
San-Ei building, 22-2, Nishi Shinjuku 1-chome, Shinjuku-ku, Tokyo, Japan
OLYMPUS OPTICAL CO. (EUROPA) GMBH.
Postfach 10 49 08, 20034, Hamburg, Germany
OLYMPUS AMERICA INC.
2 Corporate Center Drive, Melville, NY 11747-3157, U.S.A.
OLYMPUS SINGAPORE PTE LTD.
481B River Valley Road, #12-01/04 Valley Point Office Tower, Singapore 248373
OLYMPUS OPTICAL CO. (UK) LTD.
2-8 Honduras Street, London EC1Y 0TX, United Kingdom.
OLYMPUS AUSTRALIA PTY. LTD.
104 Ferntree Gully Road, Oakleigh, Victoria, 3166, Australia